

# THE EDGE EQUIPMENT GUIDE

## VINYL CUTTER

Our Roland Camm1 GS-24 Vinyl Cutter can be used to create various decals and sticker signage.

### RESOURCES AVAILABLE:

- 1 x Roland Camm1 GS-24 Vinyl Cutter
- Various colours of vinyl
- Application tape
- 2 x Weeding and application tool kits



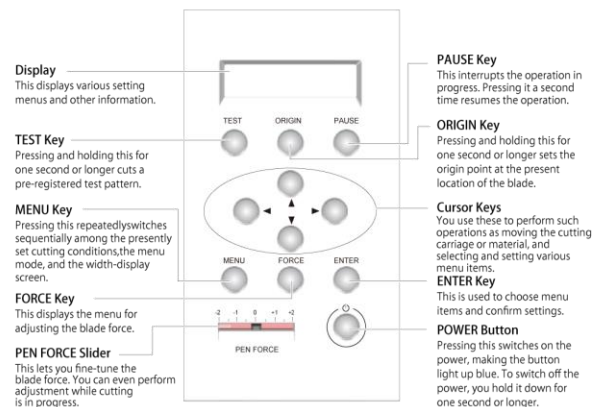
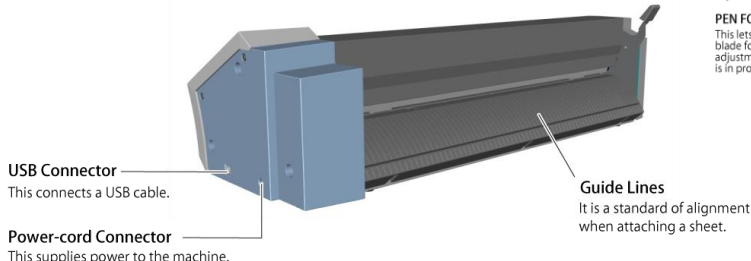
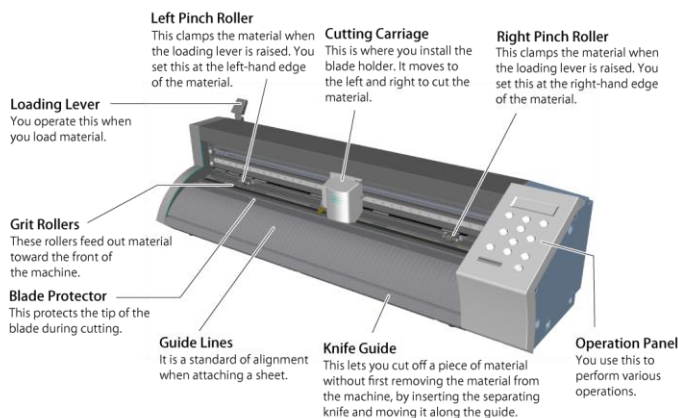
### USER GUIDE:

- Complete a small introduction into using the vinyl cutter with a staff member.
- Book a time to use the vinyl cutter during open lab hours.
- Let a staff member know when you have arrived that you have booked the vinyl cutter.

### TROUBLESHOOTING:

- Restart the vinyl cutter laptop and machine.
- Double check that everything is plugged in.
- Double check that the laptop is connected to the vinyl cutter via the USB cable.
- Refer to the user guide for more info or seek out support online.
- Ask a staff member for further assistance.

### OVERVIEW OF MACHINE:



^ Control panel

## SETTING UP ARTWORK:

Open your prepared vector artwork in Illustrator. Elements such as text or shapes made with a shape tool will need to be converted to outlines. Right click on the object and select “Create outlines” in the pop-up menu.

The artwork is now ready to be sent to the CutStudio software and the Vinyl Cutter machine.

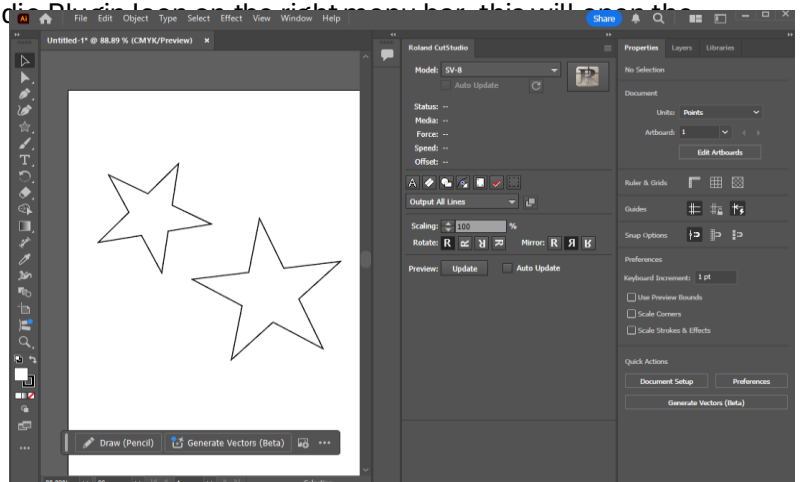
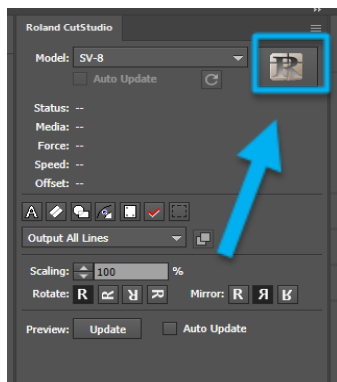
## SETTING UP THE VINYL CUTTER AND SENDING ARTWORK TO CUTSTUDIO SOFTWARE:

1. Load the media (Vinyl, masking materials or iron material) into the machine and move the rollers to the appropriate setting for the width of the vinyl and re-engage the release lever to secure the material in place.
2. Power up the Vinyl Cutter and select the “sheet” option and hit enter to allow the machine to detect the dimensions of the vinyl material.
  - At this stage it is good practice to perform a test cut to ensure the pen force is correct for the media that is be cut.
  - You don’t want the pen force to be pushing too soft - not actually cutting the vinyl
  - Or pushing too hard - meaning it digs into the backing material
  - Push the test button and inspect the cut, ensure the shape releases easily and the pen force is correct.
3. Once the Vinyl Cutter is all set up return to the computer and send your artwork to Roland Cut Studio software.

## SEND ARTWORK FROM ILLUSTRATOR TO ROLAND CUT STUDIO:

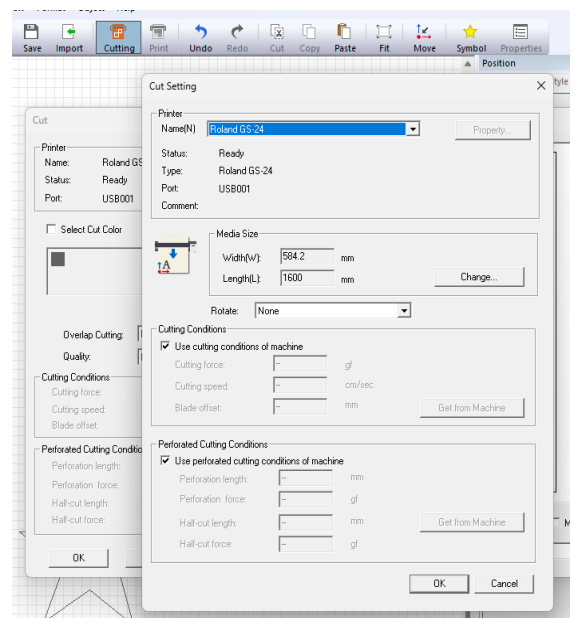
Back in Illustrator click on the CutStudio icon in the top menu bar to open the Roland CutStudio window.

Click on the CutStudio icon and the artwork will open in CutStudio as a cut path. You can move and resize the artwork if needed in CutStudio.



3. Calibrate the job in CutStudio to the dimensions of the vinyl material.

- Click on the cutting icon in the top menu bar of CutStudio.
- The Cutting settings menu will appear, select the change button under the Media Size section. A new window will appear entitled “Roland GS-24 Properties” select the button “Get from Machine” and click Ok.
- Head back to the cut window and press Ok. The machine will begin cutting out your design.



## **WEEDING AND APPLICATION TIPS:**

After the vinyl cutter is finished it is time to move onto the next steps, weeding and finally applying the sticker to your desired surface.

### **APPLICATION TIPS:**

1. Apply the transfer tape to your artwork to hold your design in place.
2. Cut of an appropriate size of transfer tape and place the transfer tape down with the stinky side touching your design. It can be best to attach in one corner and then using a blunt tool to help smooth the tape out over the design. Ensure no creases!
3. Once attached and smooth, flip over the design to smooth out the otherside with the same tool.
4. Before applying your artwork, make sure the project surface is clean and dry.
5. Peel the vinyl liner away from the transfer tape.
  - If vinyl doesn't separator from the tape, simply smooth the vinyl back onto the tape and peel away again.
6. Place the sticker onto the surface starting from one corner, rub firmly onto the surface to ensure all parts of the design stick.
7. Peel of the transfer tape at a horizontal angle, work carefully while peeling away tape.

Weeding is the process of removing the unwanted parts (negative space) of the Vinyl.

### **WEEDING TIPS:**

- Use a weeding tool to begin removing negative space from artwork.
- Work from a corner and pull the excess vinyl away at a horizontal angle to help the desired artworks corner stay stuck down.
- Cut away large unneeded areas to make the smaller details easy to get too and work with.
- Create a ball of scrap vinyl for easy clean up.

### **FAQS:**

What do I do if my material is curled upward or the leading edge is bent/creased?

- Before loading the material into the machine stretch or flatten out the material before use.

What do I do if the material has come loose?

- Hold down the power button for one second or longer. If the power does not turn off disconnect the AC adapter from the machine. Lower the loading lever and remove the material and reload the material again.

Why is the cutter not cutting the material properly?

- This is usually due to dull or stale blades. If the blades are broken or damaged, please ask a staff member.

## RESPONSIBILITIES/TERMS OF USE:

- Equipment may only be borrowed by people with a State Library of Queensland membership account and who have completed a General Induction at The Edge.
- Age requirements to book and use this resource;
  - 16+ years: may book and use equipment after completing the relevant inductions and booking requirements.
  - 13-15 years: may book and use equipment only with parent/guardian permission and supervision, after completing the relevant inductions and booking requirements.
  - 12 and under: must be supervised by an adult at all times and cannot use the equipment unless under the approval and supervision of a staff member.
- Equipment is to be used in conjunction with Safe Operating Procedures and State Library of Queensland policies - [www.slq.qld.gov.au/about/corporate-information/policies-and-guidelines](http://www.slq.qld.gov.au/about/corporate-information/policies-and-guidelines)
- Report any issues to staff immediately.
- Ensure the equipment are used within The Edge building only. This equipment is not to be moved to any other location without prior written approval from State Library.
- Use the equipment under approved conditions and parameters as outlined in this document and any activity sheets provided with the equipment along with officially referenced manuals and resources. No modifications to any part permitted.